

## Norton Internet Security 2005

Author: Will

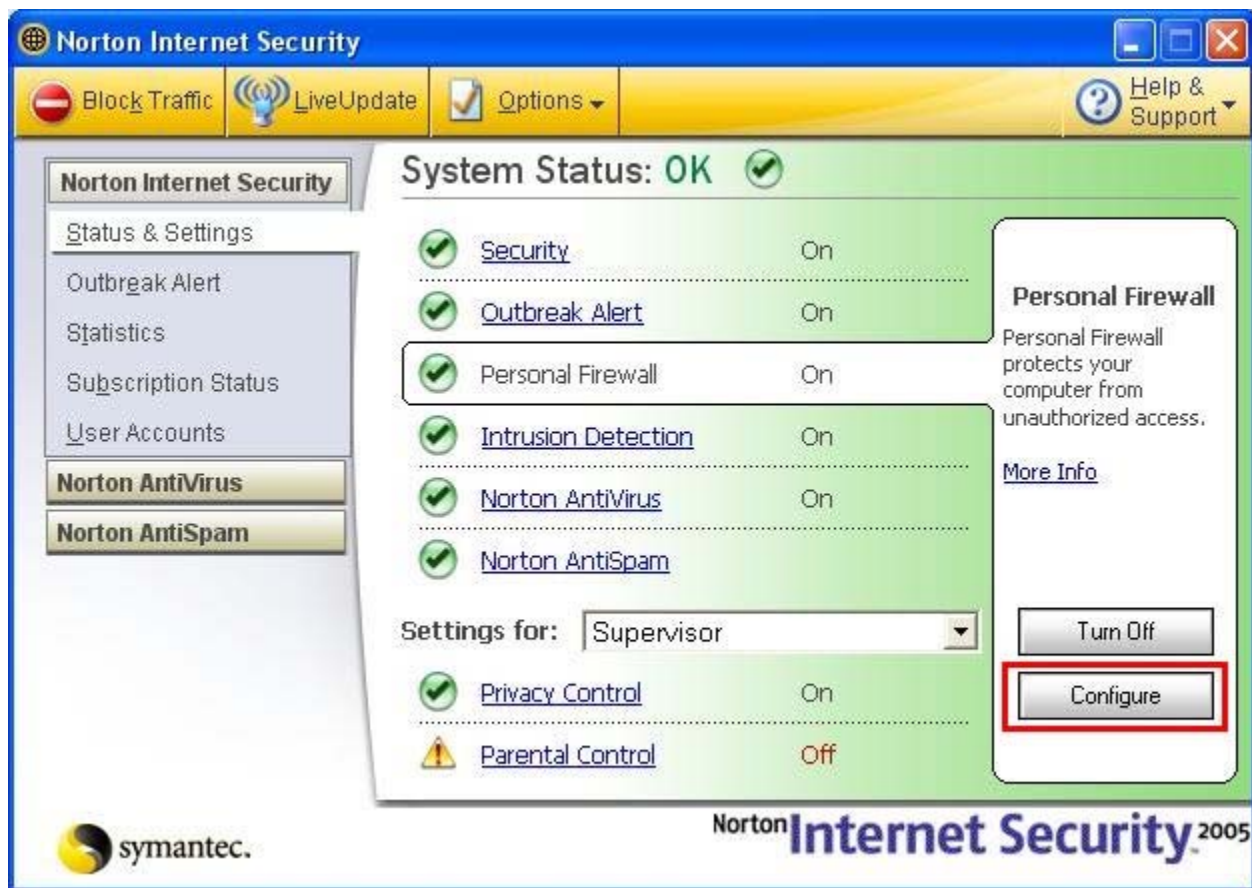
Last Update: 23/09/05

**Abstract:** This article describes how to allow a local network connection used by ActiveClient that is sometimes blocked by Norton Internet Security. These changes do not compromise the external security of your system.

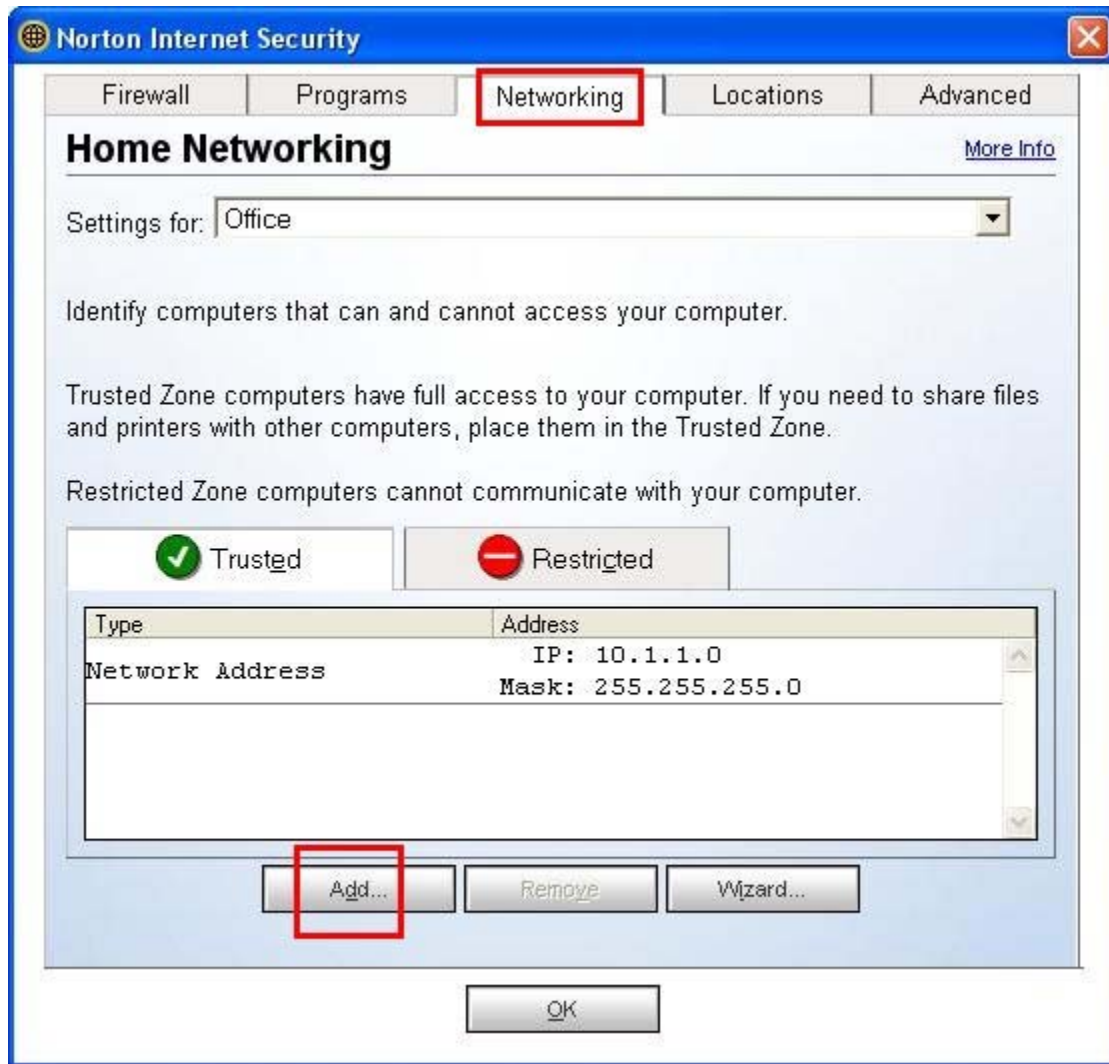
- Open Norton Internet Security by right-clicking the icon in the system tray (Next to the clock) and selecting 'Open Norton Internet Security'



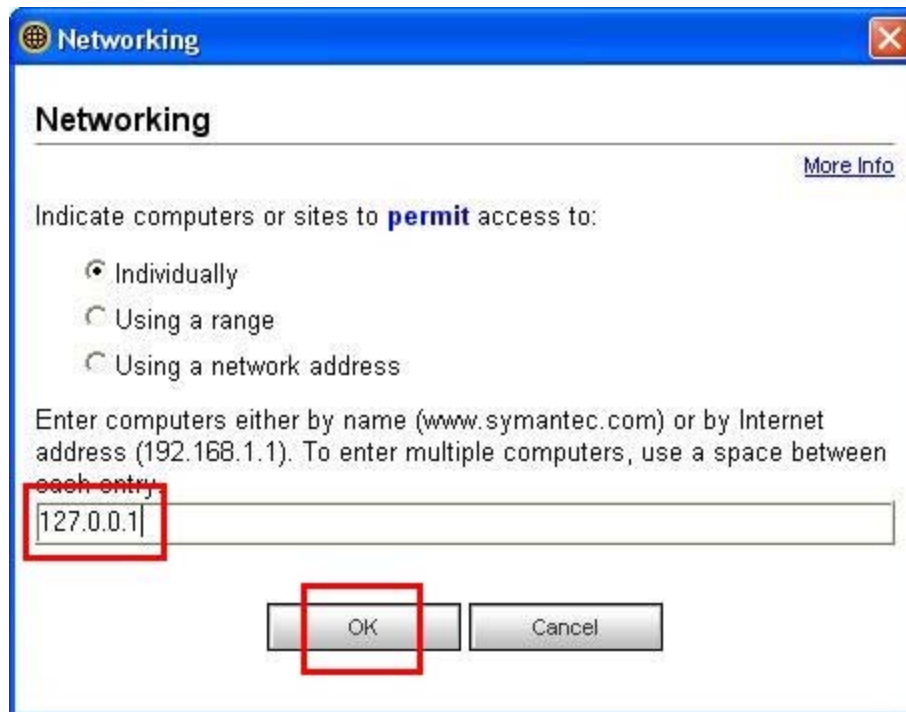
- In the window that appears, select the 'Personal Firewall' link.



- Click the Configure button on the right-hand side.
- Select the 'Networking' tab, and click the 'Add' button



- Depending on your setup, you may or may not have a similar 'Network Address' entry as seen above.
- Enter the numbers '127.0.0.1', including the three decimal points separating them, and click the 'OK' button.



- The entry should now appear in the 'Trusted' section as a Single Address.



- Success! You should be able to log into your ActiveClient successfully now.