

Windows XP Firewall

Author: Ryan

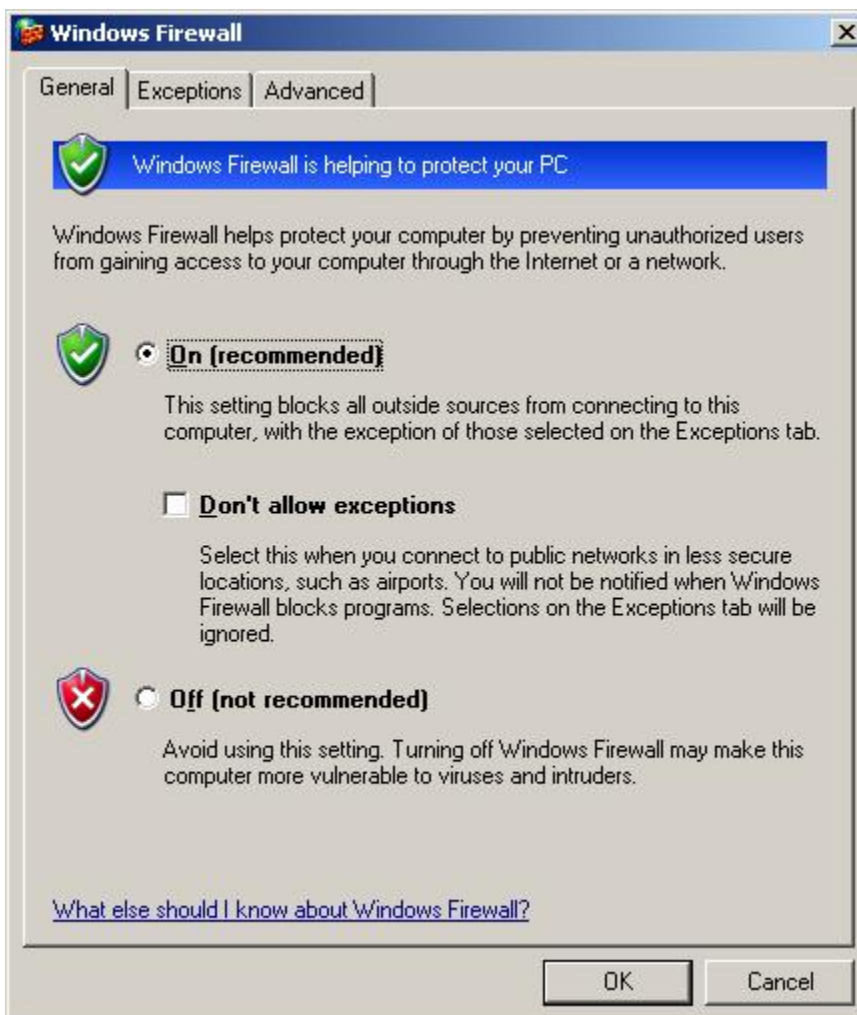
Last Update: 15/08/07

Abstract: XP SP2 turns on the Windows firewall and disables all ports by default. You need to enable port 3050 to allow ActiveClient to use its database

ActiveClient uses the Firebird Server, and the Firebird Server requires port 3050 for connections from remote computers.

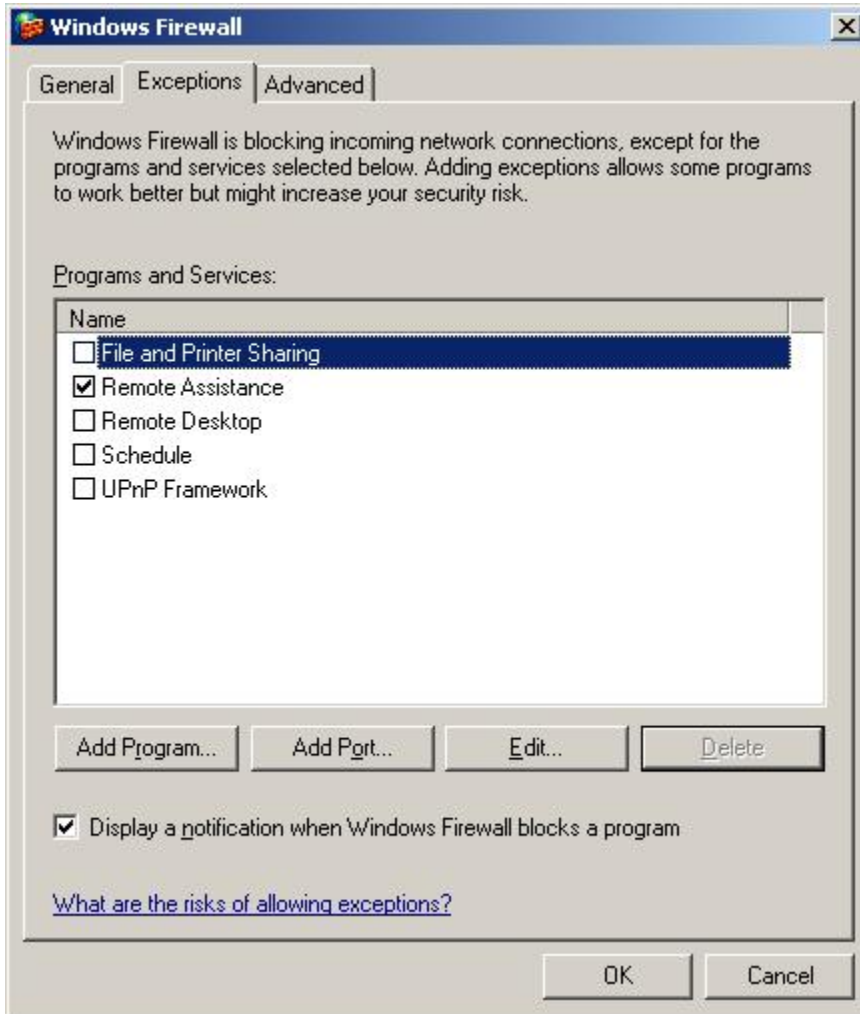
When you install Windows XP SP2, it turns on Windows firewall and disables all ports by default. To allow the Firebird Server to be accessed from a remote computer you will need to either turn off the Windows firewall, or enable port 3050. Not doing so results in the error "Unable to complete network request to host".

Windows XP SP2 adds a new control panel called Windows Firewall.

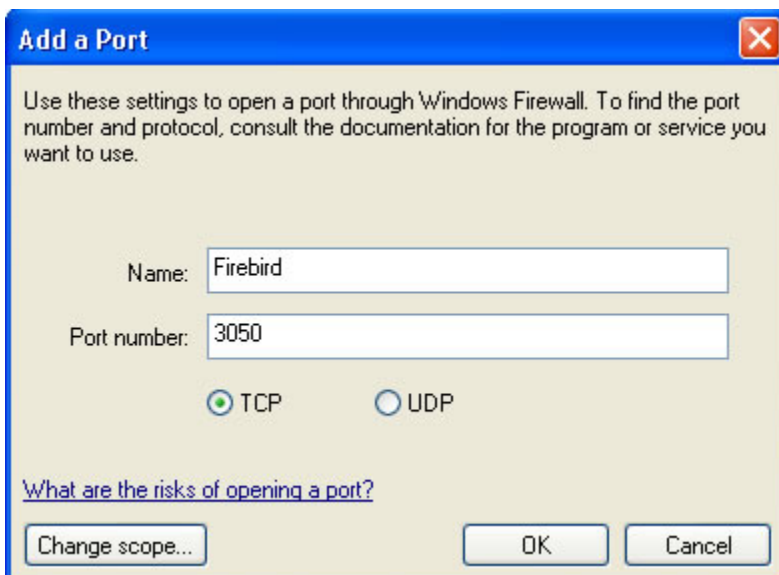


To turn off the Windows firewall is quite straight forward, just select the radio button from the control panel. However, most users will probably just want to enable port 3050. To enable port 3050, select

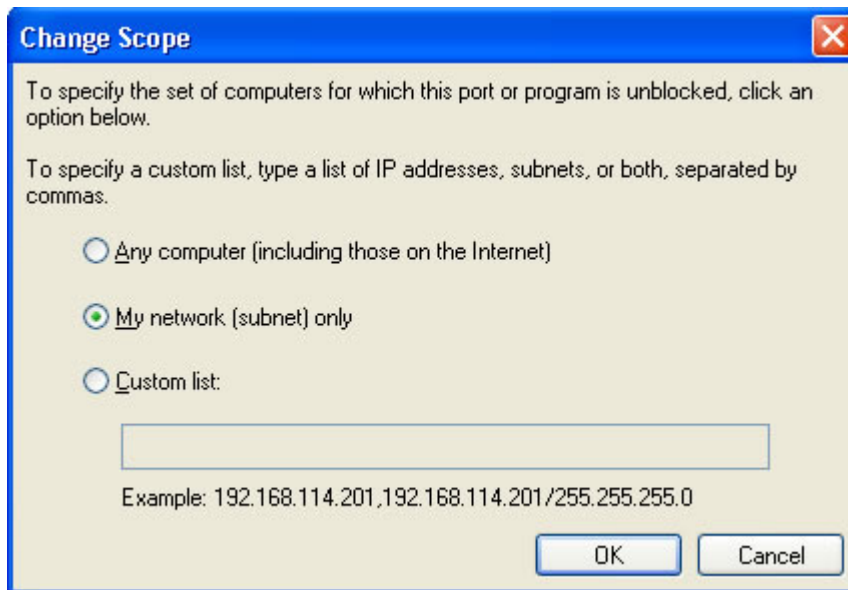
the Exceptions tab from the Windows Firewall control panel.



Next, click Add Port. You can enter any name you want, but "Firebird" is probably what you will want. Enter a port number of 3050, and leave the "TCP" radio button selected.



Now, click Change Scope. In the window that appears, select the "My network (subnet) only" option, then click OK.



Click OK 2 more times and connections to Firebird should work. No need to reboot. Note that you may need to make these changes on the server and the client.